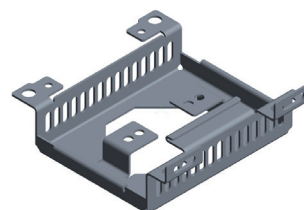
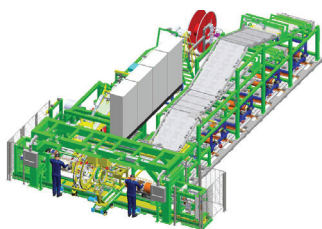
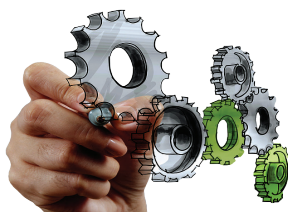




# APPLICATION MENTORING SESSION TOPICS

## TAKE YOUR TEAM'S SOLIDWORKS SKILLS TO THE NEXT LEVEL

Application Mentoring Sessions are included in your Service Agreement with GoEngineer. These can range from one-on-one screen share sessions to help you with a stubborn design problem, to instructional presentations for your team. While the agenda for these meetings is always 100% up to you, we've created a 'Menu' of suggested topics that might interest you.



# APPLICATION MENTORING **SESSION TOPICS**



## PROJECT REVIEW

Want something a little less structured than a presentation? Request a one-on-one screenshare to review your project to talk about performance, design practices, or something that has been frustrating or not working for you!



## WHAT'S NEW IN SOLIDWORKS

SOLIDWORKS releases new features and performance upgrades in yearly updates. Are you planning on upgrading SOLIDWORKS this year? Work with our Applications Engineer to build an agenda of the products you're most interested in, and choose what range of years you'd like to cover. We'll present what's new and our favorite tips and tricks from over the years.



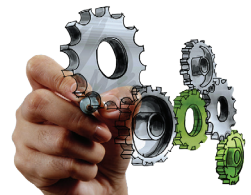
## HOW DOES SOLIDWORKS HANDLE FILE REFERENCES?

In this session, we'll discuss best practices for file saving, file sharing, file storage locations, file references, swapping file references, and we'll introduce SOLIDWORKS PDM.



## CUSTOMER ONBOARDING

Connect with your local team to kickstart your SOLIDWORKS journey with GoEngineer. We will review your subscription benefits, and walkthrough setup of your SOLIDWORKS and my.solidworks.com account. See how to schedule mentoring sessions and how best to troubleshoot issues with technical support. Finally, our Applications Engineer will show you where to access certification codes, and advise on how to prepare for exams.



## SIMULATION 101

Simulation Xpress is included in every seat of SOLIDWORKS, but we'll tailor the session to the Simulation package you have. Our Applications Engineer will review best practices for prepping the model, understanding the study tree, meshing the model, and running the model. Finally, we'll introduce some tools for post-processing and analyzing the results and sharing the results.

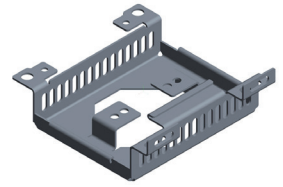


# APPLICATION MENTORING **SESSION TOPICS**



## INTRO TO SHEET METAL

Sheet Metal is included in every seat of SOLIDWORKS and it's so easy to use. Our Applications Engineer will introduce 3 ways to create a sheet metal part and show you how to assign gage (thickness), create flanges, holes, hems, corner treatments, and more. We'll also show you where to find forming features and formed gussets.



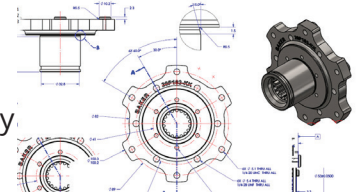
## INTRO TO WELDMENTS

Do you need to design some structural members? Our Applications Engineer will show you where to download a big library of weldment profile and how to create simple line sketches to generate an entire structure. We address mitered corners, cut lists, endcaps, gaps, and more.



## DRAWINGS TIPS AND TRICKS

Are you creating Drawings the hard way? Our Applications Engineer will discuss how to repurpose the information stored in the model and display it on your drawings. We'll briefly talk about drawing templates and sheet format and then cover 30 drawing tips in 30 minutes.



## HARDWARE AND PERFORMANCE REVIEW

Are your computer specs ideal for running SOLIDWORKS and/or Simulations and Renderings? In this session we'll take a look at your hardware, graphics card, and settings. We'll make sure you have frequent backups in place, show you the diagnostic RX tool, and explain how to schedule regular maintenance for your machine. We'll share with you the key contributors to slow performance.



## CUSTOM PROPERTIES AND PROPERTY TAB BUILDER (PARTS, ASSEMBLIES, AND DRAWINGS)

Build more intelligence into your SOLIDWORKS files by assigning metadata, such as Material, Vendor, Thickness, Drawn By, and more. Take it a step further by building a form for all of your SOLIDWORKS users to populate, ensuring consistency from user to user.



# APPLICATION MENTORING **SESSION TOPICS**



## TROUBLESHOOTING TIPS

When something goes wrong, you can spend too much time trying to fix it! Even though Technical Support is included in your Service Agreement, you can still benefit by learning what the error messages mean, understanding file corruption messages, and glitchy behavior. We'll address performance, uninstall/reinstall, and the secret RX tool.



## SOLIDWORKS TOOLS AND UTILITIES

Our Applications Engineer will uncover some of the best utilities included with SOLIDWORKS. We'll cover Xpress Tools, Treehouse, RX, Task Manager, Property Tab Builder, Compare Documents and more.



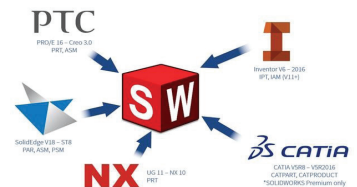
## USER INTERFACE FAVORITES

This topic speaks to all audiences and has been a crowd favorite! We'll cover Hot keys, shortcuts, mouse gestures, Alt/Shift/Tab/Ctrl, customizing, and all of the ways to be more agile with SOLIDWORKS. We'll also cover 30 tips in 30 minutes.



## IMPORT BEST PRACTICES (also available as an e-Course)

When working with non-native files, what is the best way to import them? What are neutral File Types? How do we import files from another 3D CAD platform? What are the importing methods and settings available to me? We'll also briefly discuss repair tools and compare tools.



## LARGE ASSEMBLY BEST PRACTICES (also available as an e-Course)

As you build your large assemblies, you might notice it's slow to open, save, pan, zoom, and rotate. How do we fix that? We'll look at more efficient ways to design and edit large assemblies and we'll also show you some troubleshooting tools to help you find that one 'bad apple' that's dragging the whole assembly down.

